



Aerial view of Pepco's Benning Road property.

## Facts about:

# Pepco's Benning Road Facility

Pepco is committed to conducting its business activities with respect and care for the environment, and this includes our Benning Road facility. We are equally committed to establishing an ongoing dialogue with the neighboring community. We want to hear their concerns and share with them information about the assessment of environmental conditions at Benning Road and about any necessary cleanup activities in and adjacent to the facility. Here are answers to some of the questions we have heard so far.

### What is happening at Pepco's Benning Road facility?

Pepco's Benning Road facility is an important part of Pepco's electric power transmission and distribution system, serving the Washington, D.C. area. It is an industrial facility that has operated for over 100 years, and is home to the Benning Road Power Plant, Pepco's Benning Service Center and major electric transmission and distribution facilities. The Service Center occupies the largest part of the property, and accommodates more than 700 Pepco employees. Service Center employees work in maintenance and construction of Pepco's electric distribution system; system engineering; vehicle fleet maintenance and refueling; and central warehouses for all the materials, supplies and equipment needed to operate the Pepco system.

Since the 1990s, the power plant at Benning has operated for about 10 to 15 days per year on average, during periods of peak electricity demand. Pepco has made major investments to expand the transmission capacity at Benning in order to eliminate dependence on electricity generated by the Benning Road Power Plant. The plant is on schedule to be "decommissioned"

(permanently shut down) in May 2012. The Service Center and transmission and distribution facilities will continue to operate after the power plant has closed.

### What is the Benning "Consent Decree"?

The Benning Consent Decree is a legal agreement between the District of Columbia's Department of the Environment (DDOE) and Pepco that obligates Pepco to conduct an assessment of environmental conditions at the Benning Road site and adjacent areas of the Anacostia River. The assessment – to be carried out according to the highest environmental standards – will proceed in two stages:

1. a "Remedial Investigation" to determine whether or not Pepco's historical operations at its Benning Road facility have contributed to pollution of the sediments of the adjacent portions of the Anacostia River, and whether or not current conditions at the Benning Road property present any continuing threat to the river; and

*(continues)*

2. a “Feasibility Study” to identify and evaluate potential cleanup actions. DDOE will use the results of the assessment to determine, with input from the public, what, if any, cleanup actions should be undertaken at the Benning Road facility or adjacent areas of the River. The Consent Decree serves as a public record of obligatory actions to which both DDOE and Pepco have agreed and to which Pepco has committed.

### How did the Consent Decree come about?

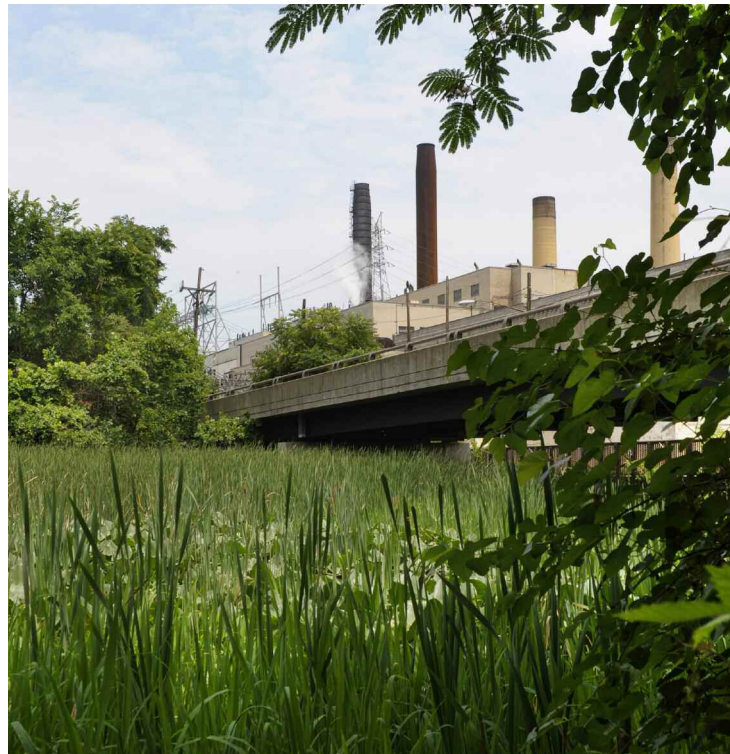
The Anacostia River is an important resource to the Washington, D.C. community. The Benning Road facility has been identified by District and federal government agencies as one of six sites potentially contributing to contamination of the Lower Anacostia River. Four of these sites – the US Navy Yard, the U.S. Southeast Federal Center and National Park Service facilities at Poplar Point and the Kenilworth Landfill – are government properties; and the fifth is owned by Washington Gas. As part of its larger effort to clean up and protect the Anacostia River, DDOE asked Pepco to assess whether and to what extent the Benning Road site has contributed to problems in the river. Pepco agreed to perform the assessment, and that agreement is memorialized in the Consent Decree.

### What is Pepco doing now?

- Pepco operates both a strong environmental management system and an ongoing monitoring system at its Benning Road facility to ensure that current practices at the site do not contribute to the contamination of the Anacostia River.



*This rain garden is part of Pepco's low-impact development program of storm water management. The garden's natural filtration reduces any impact on the river.*



*This wetlands nature preserve — a home to many indigenous and migrating wildlife species — was created by Pepco on U.S. Park Service land between the western boundary of the Benning Road facility and the shores of the Anacostia River.*

- Pepco has hired a firm of expert environmental consultants to perform the assessment of environmental conditions at the Benning Road site and adjacent areas of the river as required by the Consent Decree.
- The consultants have begun developing their work plan. Once that plan is approved by DDOE, they expect to complete the remedial investigation within one year and will complete the feasibility study promptly thereafter.
- Pepco will continue to do its part to improve environmental quality in the Anacostia River and stands ready to complete whatever remediation and restoration is necessary to fully address the findings of the assessment being performed under the Consent Decree.
- Pepco will maintain an open dialogue with our neighbors, customers and other stakeholders to respond to concerns about the potential impact of our operations on the community and the environment.

For more information contact:

**Fariba Mahvi**  
Lead Environmental  
Engineer & Benning Road  
Project Manager  
202-331-6641

**Donna Cooper**  
Vice President  
District of Columbia Affairs  
202-872-2477