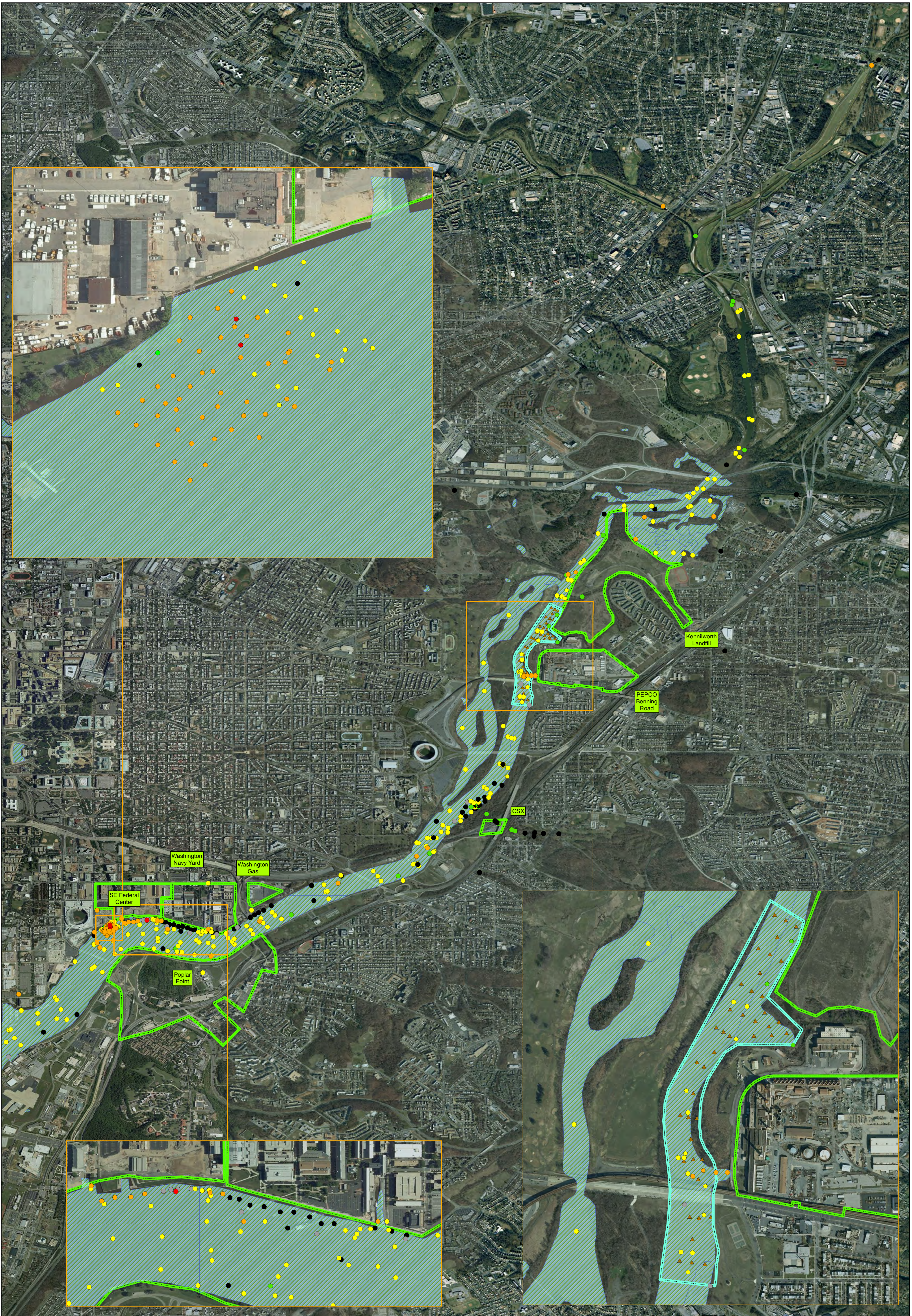




## **Appendix B**

### **Existing Anacostia River Chemical Data based on NOAA Database**



**Total PCBs Concentrations in the Anacostia River Surficial Sediment**  
**Benning Road Facility RI/FS Project**  
**3400 Benning Rd., NE**  
**Washington, DC 20019**

0 0.475 0.95 1.9 Miles

Data presented has been queried from the NOAA Query Manager Database and may include data from the following studies:  
 1980-92 VA State Water Control Board  
 1981-82 MD DEP Water Monitoring Data  
 1986-99 NSWC White Oak Env. GIS Layer  
 1989 ICP/RB/Limo-Tech Sediment Survey  
 1990 EMAP - Chesapeake Bay  
 1991 EMAP - Chesapeake Bay  
 1992 Boiling AFB - SW Corner  
 1992 Potomac & Anacostia Sediment Study  
 1993 EMAP - Chesapeake Bay  
 1993 FWS Kennilworth Marsh  
 1995 PEPCO  
 1995 Washington Navy Yard  
 1996 PWS PAH/PCB - Mason Neck  
 1996 WA Gas - East Station Project  
 1996 Wetland Restoration - Kennilworth  
 1998 BARC RI  
 1998 USACE Federal Nav Channel  
 1999 AVTA Sediment Quality Triad  
 1999 GSA SE Federal Center  
 1999 WA Navy Yard RI  
 2000 ANS Sediment Study  
 2000 Ambient Tox Chesapeake Bay  
 2000 USFWS Bioavailability  
 2003 Active Capping Site Char Rpt  
 2009 Final Site Inspection Report

**Total PCBs (ppm)**

- <59.8
- 59.8 - 676
- 676 - 5000
- 5000 - 100000+
- Non-Detect
- No Record

**From 2009 SI Report**

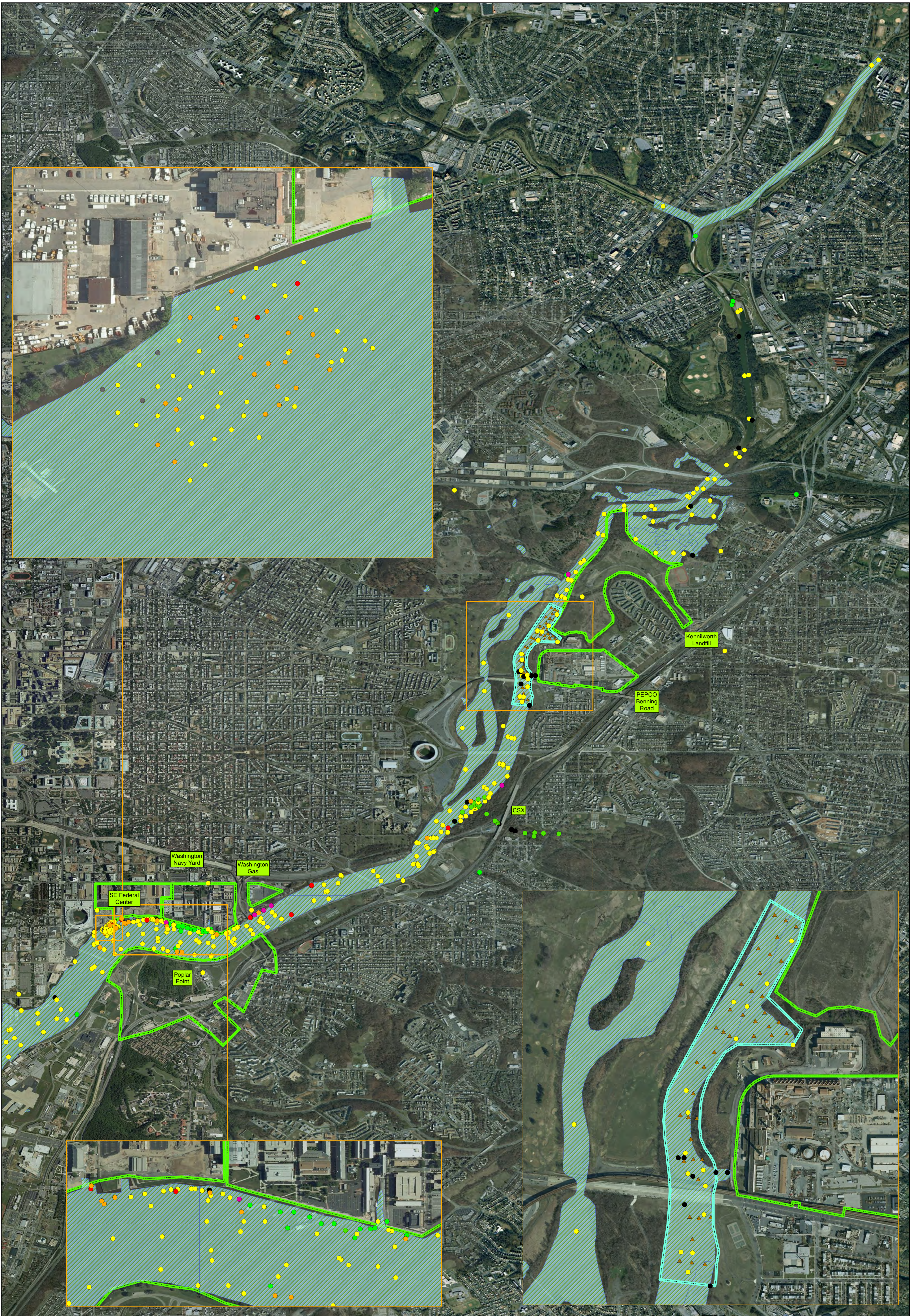
- <59.8
- 59.8 - 676
- 676 - 5000
- 5000 - 10000

- ▲ Proposed Sampling Location
- ▭ Property Boundaries
- ▭ Proposed Study Area
- ▭ Riverine Boundary

Note: Totals from 2009 SI Report are sums of Aroclors 1254 and 1260

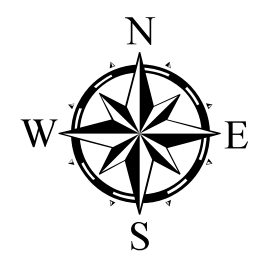


Figure 1



**Total PAH Concentrations in the Anacostia River Surficial Sediment**  
**Benning Road Facility RI/FS Project**  
**3400 Benning Rd., NE**  
**Washington, DC 20019**

0 0.475 0.95 1.9 Miles



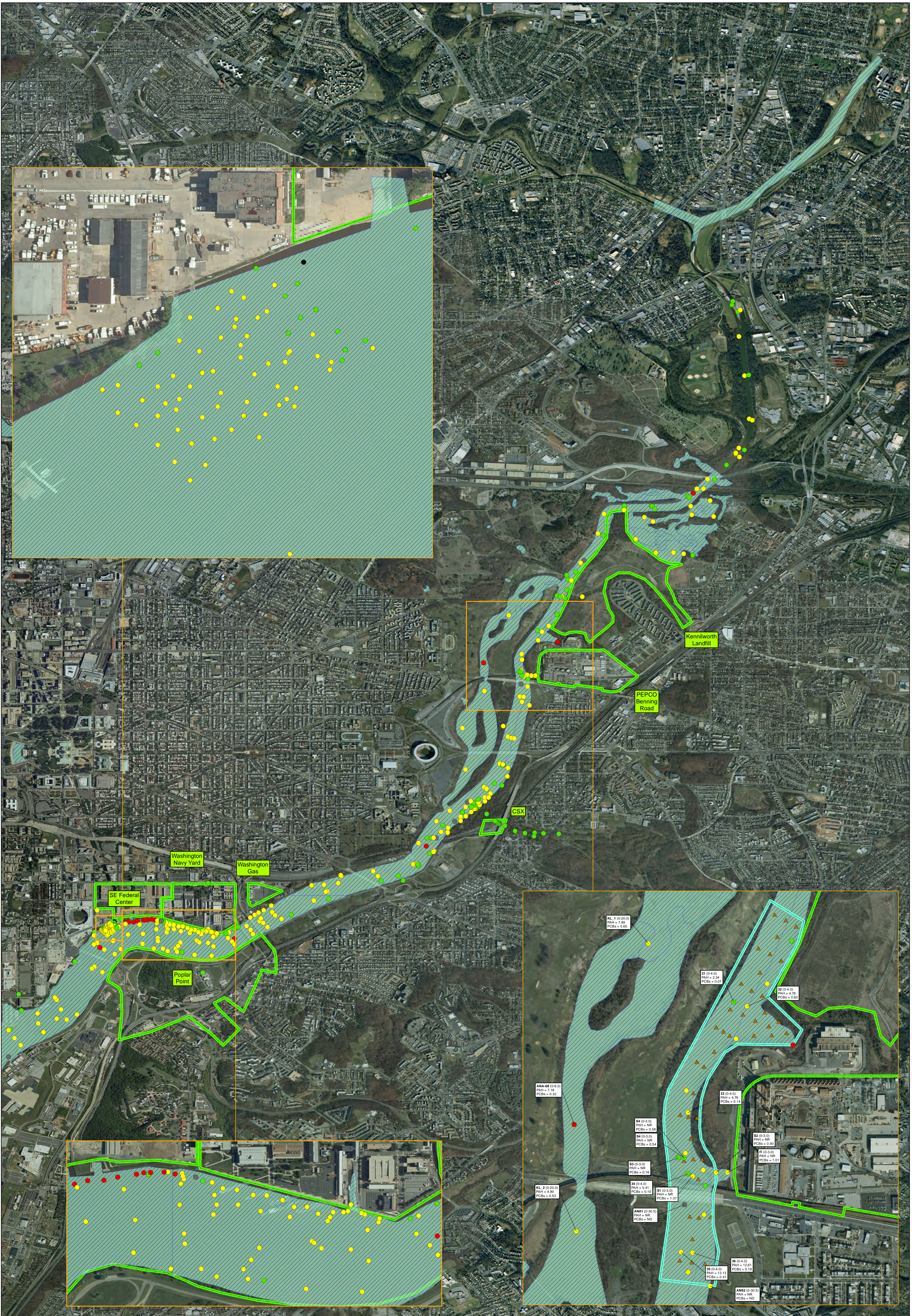
Data presented has been queried from the NOAA Query Manager Database and may include data from the following studies:

1980-92 VA State Water Control Board	1996 PWS PAH/PCB - Mason Neck
1981-82 MD DEP Water Monitoring Data	1996 WA Gas - East Station Project
1986-99 NSWC White Oak Env. GIS Layer	1996 Wetlands Restoration - Kennilworth
1989 ICP/RB/Limo-Tech Sediment Survey	1998 BARC RI
1990 EMAP - Chesapeake Bay	1998 USACE Federal Nav Channel
1991 EMAP - Chesapeake Bay	1999 AVTA Sediment Quality Triad
1992 Boiling AFB - SW Corner	1999 GSA SE Federal Center
1992 Potomac & Anacostia Sediment Study	1999 WA Navy Yard RI
1993 EMAP - Chesapeake Bay	2000 ANS Sediment Study
1993 FWS Kennilworth Marsh	2000 Ambient Tox Chesapeake Bay
1995 PEPCO	2000 USFWS Bioavailability
1995 Washington Navy Yard	2003 Active Capping Site Char Rpt
	2009 Final Site Investigation Report

- PAH values (ppm)**
- <1.61
  - 1.61 - 22.8
  - 22.8 - 50.0
  - 50.0 - 100.0
  - 100 +
  - Non-Detect
  - No Record
- ▲ Proposed Sampling Location  
 Proposed Study Area  
 Property Boundaries  
 Riverine Boundary



Figure 2



**Total Cadmium Concentrations in the Anacostia River Surficial Sediment**  
**Benning Road Facility RI/FS Project**  
**3400 Benning Rd., NE**  
**Washington, DC 20019**

0 0.475 0.95 1.9 Miles

Data presented has been queried from the NOAA Query Manager Database and may include data from the following studies:

1980-92 VA State Water Control Board	1996 PWS PAH/PCB - Mason Neck
1981-82 MD DEP Water Monitoring Data	1996 WA Gas - East Station Project
1986-99 NSWC White Oak Env. GIS Layer	1996 Wetlands Restoration - Kennilworth
1989 ICP/RI/Limo-Tech Sediment Survey	1998 BARC RI
1990 EMAP - Chesapeake Bay	1998 USACE Federal Nav Channel
1991 EMAP - Chesapeake Bay	1999 AWTA Sediment Quality Triad
1992 Bolling AFB - SW Corner	1999 GSA SE Federal Center
1992 Potomac & Anacostia Sediment Study	1999 WA Navy Yard RI
1993 EMAP - Chesapeake Bay	2000 ANS Sediment Study
1993 FWS Kennilworth Marsh	2000 Ambient Tox Chesapeake Bay
1995 PEPCO	2000 USFWS Bioavailability
1995 Washington Navy Yard	2003 Active Clipping Site Char Rpt
	2009 Final Site Inspection Report

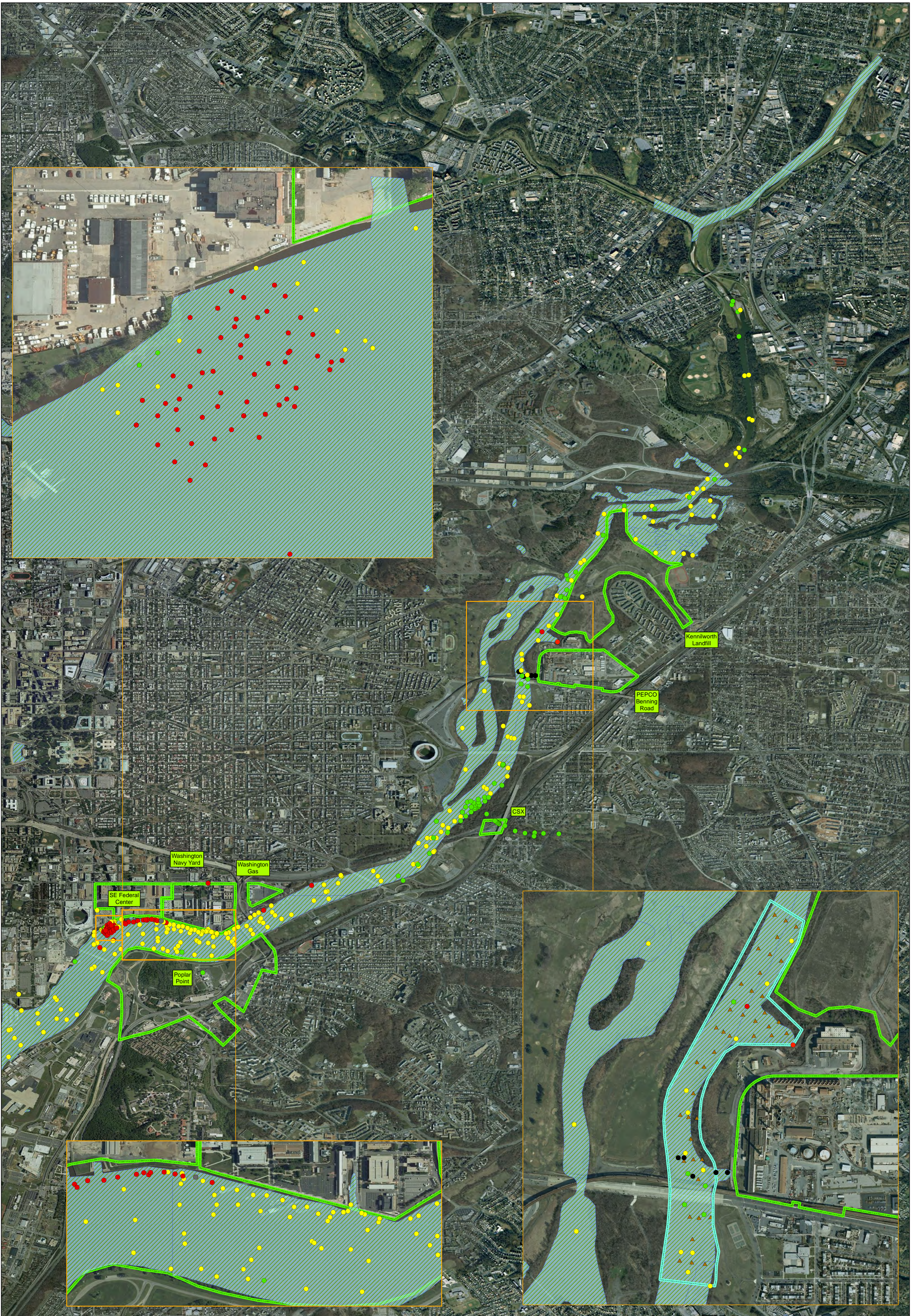
**Total Cadmium (mg/kg)**

- < 0.99
- 0.99 - 4.98
- 4.98+
- Non-Detect
- No Record

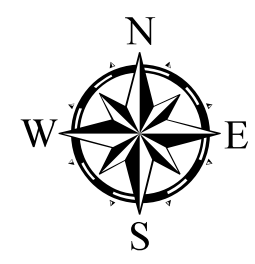
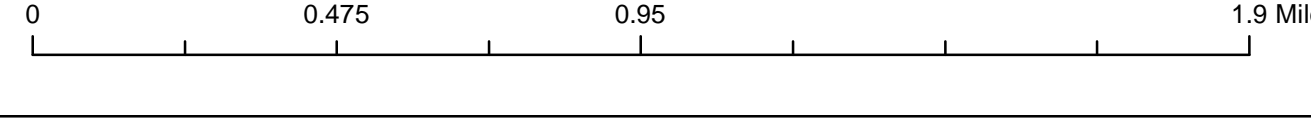
▲ Proposed Sampling Location  
 [Green Outline] Proposed Study Area  
 [Green Outline] Property Boundaries  
 [Blue Hatched] Riverine Boundary



Figure 3



**Total Copper Concentrations in the Anacostia River Surficial Sediment**  
**Benning Road Facility RI/FS Project**  
**3400 Benning Rd., NE**  
**Washington, DC 20019**



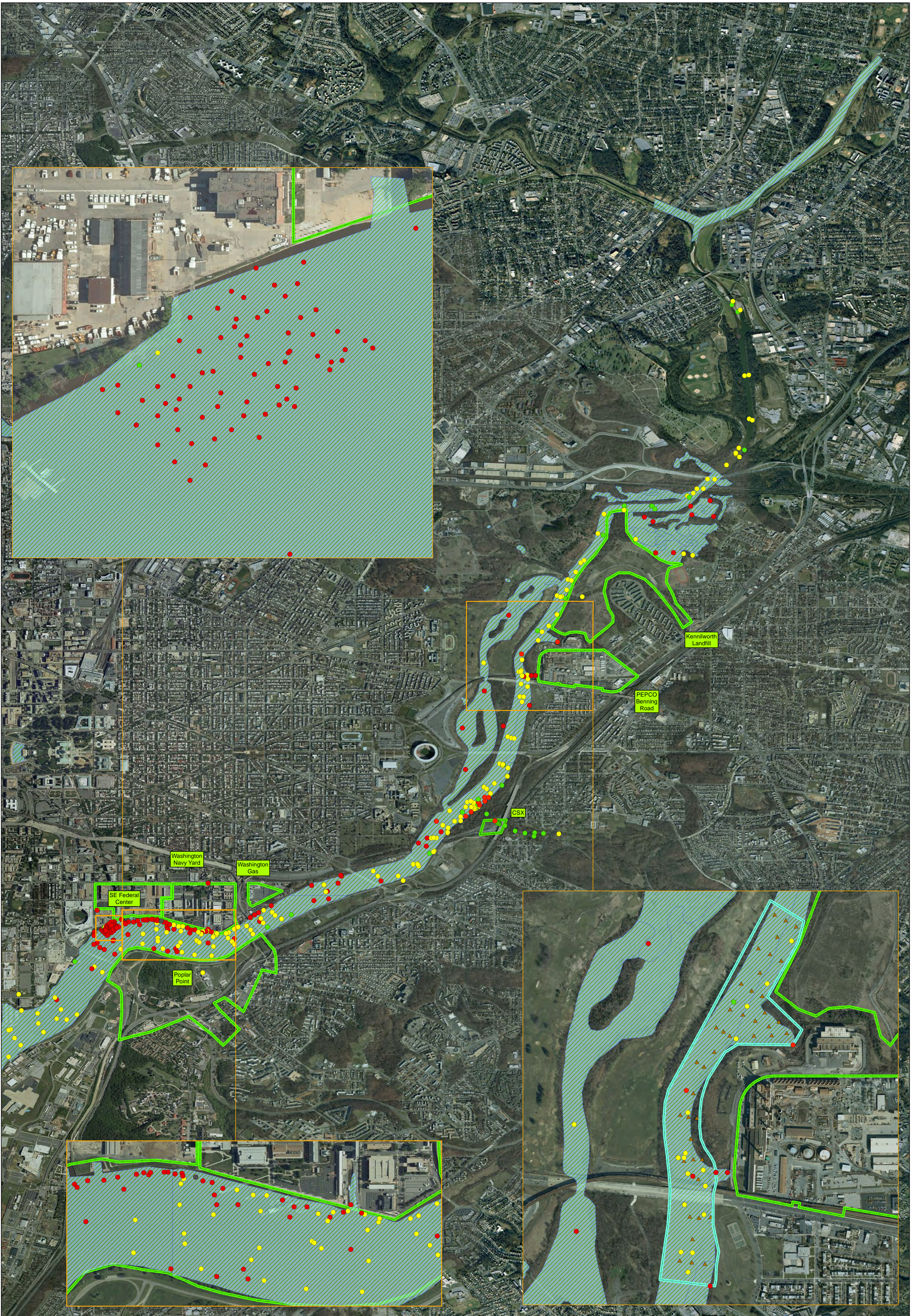
Data presented has been queried from the NOAA Query Manager Database and may include data from the following studies:

- 1980-92 VA State Water Control Board
- 1981-82 MD DEP Water Monitoring Data
- 1986-99 NSWC White Oak Env. GIS Layer
- 1989 ICP/B/Limco-Tech Sediment Survey
- 1990 EMAP - Chesapeake Bay
- 1991 EMAP - Chesapeake Bay
- 1992 Potomac & Anacostia Sediment Study
- 1993 EMAP - Chesapeake Bay
- 1993 FWS Kennilworth Marsh
- 1995 PEPSCO
- 1995 Washington Navy Yard
- 1996 PWS PAH/PCB - Mason Neck
- 1996 WA Gas - East Station Project
- 1996 Wetland Restoration - Kennilworth
- 1997 DC Sediment Core Analysis
- 1998 BARC RI
- 1998 USACE Federal Nav Channel
- 1999 AFTA Sediment Quality Triad
- 1999 WA Navy Yard RI
- 2000 ANS Sediment Study
- 2000 Ambient Tox Chesapeake Bay
- 2000 USFWS Bioavailability
- 2003 Active Capping Site Char Rpt
- 2009 Final Site Inspection Report

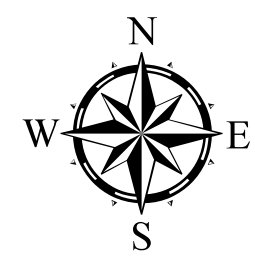
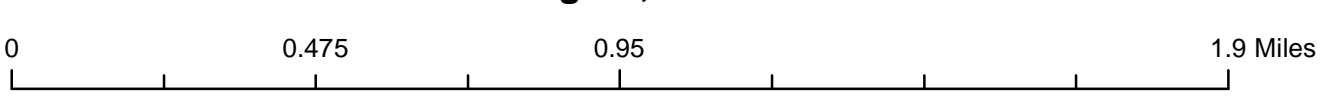
- Total Copper (mg/kg)**
- <math>< 31.6</math>
  - 31.6 - 149.0
  - 149.0+
  - Non-Detect
  - No Record
  - ▲ Proposed Sampling Location
  - Proposed Study Area
  - Property Boundaries
  - Riverine Boundary



Figure 4



**Total Lead Concentrations in the Anacostia River Surficial Sediment  
Benning Road Facility R/FS Project  
3400 Benning Rd., NE  
Washington, DC 20019**

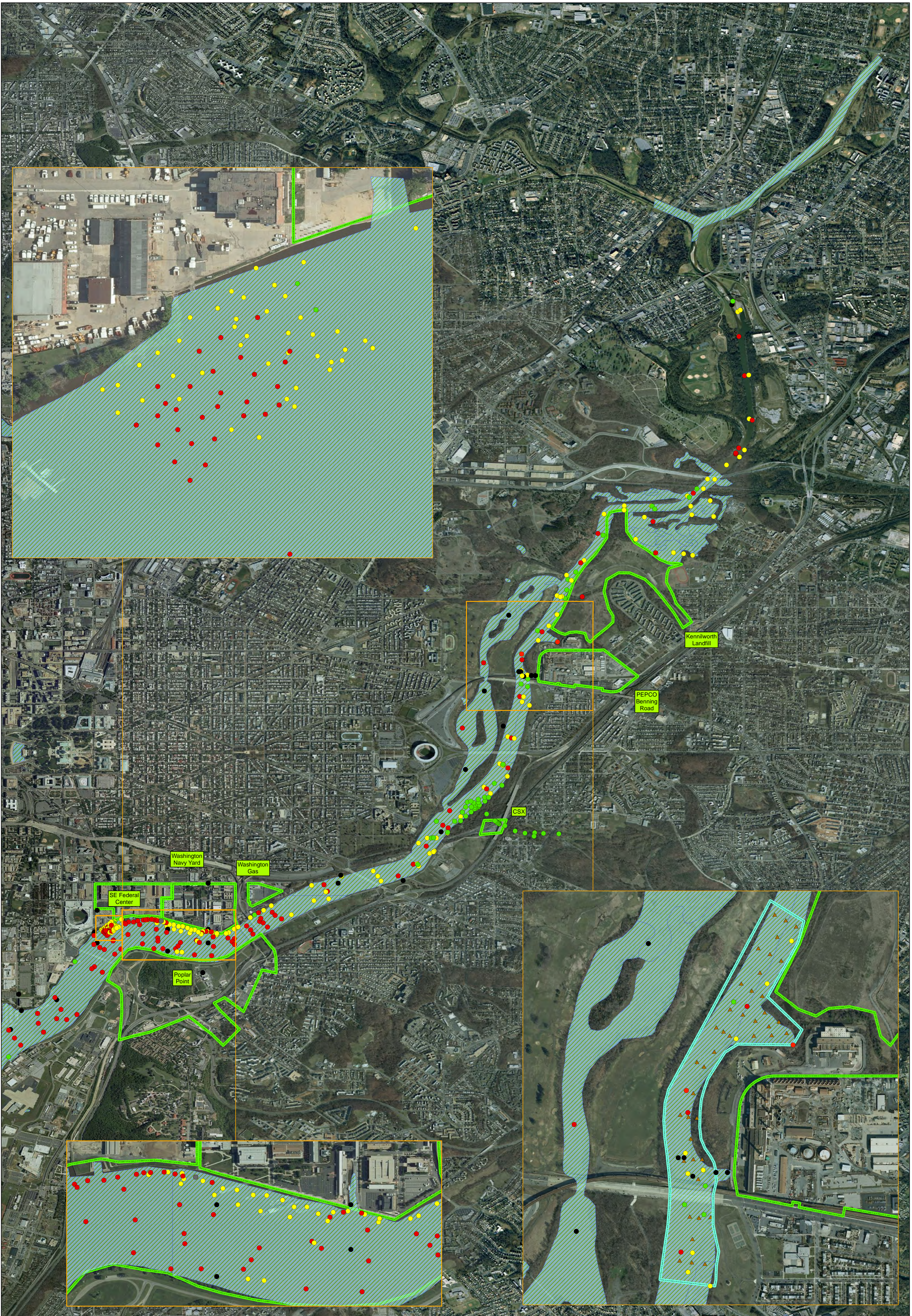


Data presented has been queried from the NOAA Query Manager Database and may include data from the following studies:  
 1980-92 VA State Water Control Board  
 1981-82 MD DEP Water Monitoring Data  
 1986-98 NSWC White Oak Env. GIS Layer  
 1989 ICP/B/Limco-Tech Sediment Survey  
 1990 EMAP - Chesapeake Bay  
 1991 EMAP - Chesapeake Bay  
 1992 Potomac & Anacostia Sediment Study  
 1993 EMAP - Chesapeake Bay  
 1993 FWS Kennilworth Marsh  
 1995 PEPCO  
 1995 Washington Navy Yard  
 1996 PWS PAH/PCB - Mason Neck  
 1996 WA Gas - East Station Project  
 1996 Wetland Restoration - Kennilworth  
 1998 BARC RI  
 1998 USACE Federal Nav Channel  
 1999 AVTA Sediment Quality Triad  
 1999 GSA SE Federal Center  
 1999 WA Navy Yard RI  
 2000 ANS Sediment Study  
 2000 Ambient Tox Chesapeake Bay  
 2000 USFWS Bioavailability  
 2003 Active Clipping Site Char Rpt  
 2009 Final Site Inspection Report

- Total Lead (mg/kg)**
- <35.8
  - 35.8 - 128.0
  - 128.0+
  - Non-Detect
  - No Record
- ▲ Proposed Sampling Location  
 □ Proposed Study Area  
 □ Property Boundaries  
 ▨ Riverine Boundary



Figure 5



**Total Nickel Concentrations in the Anacostia River Surficial Sediment**  
**Benning Road Facility RI/FS Project**  
**3400 Benning Rd., NE**  
**Washington, DC 20019**

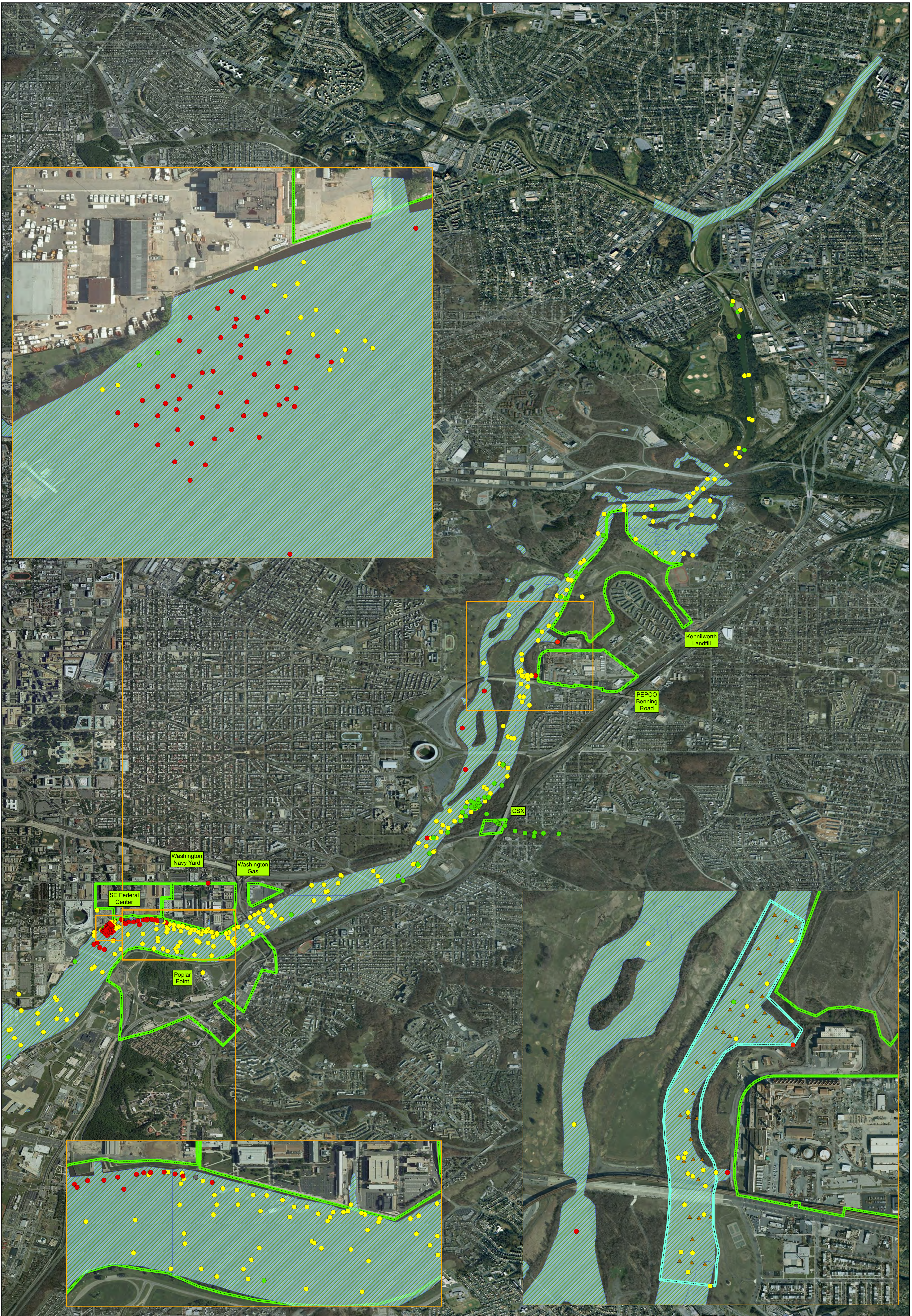
0 0.475 0.95 1.9 Miles

Data presented has been queried from the NOAA Query Manager Database and may include data from the following studies:  
 1980-92 VA State Water Control Board  
 1981-82 MD DEP Water Monitoring Data  
 1986-99 NSWC White Oak Env. GIS Layer  
 1989 ICP/RB/Limo-Tech Sediment Survey  
 1990 EMAP - Chesapeake Bay  
 1991 EMAP - Chesapeake Bay  
 1992 Potomac & Anacostia Sediment Study  
 1993 EMAP - Chesapeake Bay  
 1993 FWS Kennilworth Marsh  
 1995 PEPSCO  
 1995 Washington Navy Yard  
 1996 PWS PAH/PCB - Mason Neck  
 1996 WA Gas - East Station Project  
 1996 Wetland Restoration - Kennilworth  
 1998 BARC RI  
 1998 USACE Federal Nav Channel  
 1999 AVTA Sediment Quality Triad  
 1999 GSA SE Federal Center  
 1999 WA Navy Yard RI  
 2000 ANS Sediment Study  
 2000 Ambient Tox Chesapeake Bay  
 2000 LUSTWS Bioavailability  
 2003 Active Capping Site Char Rpt  
 2009 Final Site Inspection Report

- Total Nickel (mg/kg)**
- <22.7
  - 22.7 - 48.6
  - 48.6+
  - Non-Detect
  - No Record
  - ▲ Proposed Sampling Location
  - ▭ Proposed Study Area
  - ▭ Property Boundaries
  - ▭ Riverine Boundary

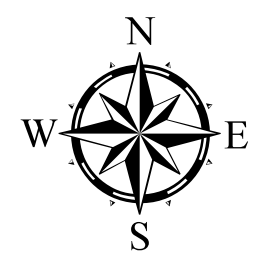


Figure 6



**Total Zinc Concentrations in the Anacostia River Surficial Sediment**  
**Benning Road Facility RI/FS Project**  
**3400 Benning Rd., NE**  
**Washington, DC 20019**

0 0.475 0.95 1.9 Miles



Data presented has been queried from the NOAA Query Manager Database and may include data from the following studies:  
 1980-92 VA State Water Control Board  
 1981-82 MD DEP Water Monitoring Data  
 1986-98 NSWC White Oak Env. GIS Layer  
 1989 ICP/B/Limco-Tech Sediment Survey  
 1990 EMAP - Chesapeake Bay  
 1991 EMAP - Chesapeake Bay  
 1992 Potomac & Anacostia Sediment Study  
 1993 EMAP - Chesapeake Bay  
 1993 FWS Kennilworth Marsh  
 1995 PEPSCO  
 1995 Washington Navy Yard  
 1996 PWS PAH/PCB - Mason Neck  
 1996 WA Gas - East Station Project  
 1996 Wetland Restoration - Kennilworth  
 1987 DC Sediment Core Analysis  
 1998 BARC RI  
 1998 USACE Federal Nav Channel  
 1999 AFTA Sediment Quality Triad  
 1999 GSA SE Federal Center  
 1999 WA Navy Yard RI  
 2000 ANS Sediment Study  
 2000 Ambient Tox Chesapeake Bay  
 2000 USFWS Bioavailability  
 2003 Active Capping Site Char Rpt  
 2009 Final Site Inspection Report

- Total Zinc (mg/kg)**
- <121.0
  - 121.0 - 459.0
  - 459.0+
  - Non-Detect
  - No Record
- Proposed Sampling Location**
- ▲
- Proposed Study Area**
- ▭ (light blue diagonal pattern)
- Property Boundaries**
- ▭ (green outline)
- Wetland**
- ▭ (light blue diagonal pattern)



Figure 7