



An Exelon Company

Appendix Z

Observations from CCTV Inspection

PREPARED FOR



PEPCO
BENNING ROAD FACILITY
3400 BENNING ROAD, NE
WASHINGTON, D.C. 20018

PREPARED BY



AECOM
8000 VIRGINIA MANOR ROAD
SUITE 110
BELTSVILLE, MD 20705

LEGEND

- STRUCTURAL DEFECTS OBSERVED AT STORM DRAIN LATERALS THAT DO NOT RECEIVE DOWNSTREAM STORMWATER TREATMENT. THESE INCLUDE:
 - a) M38A TO I39
 - b) M51C TO DISCHARGE 407
 - c) CATCH BASIN INLETS AT I-75, I-76, AND I-77
 - d) INLET I-30
 - e) INLET I07A TO MH-4
- STRUCTURAL DEFECTS OBSERVED AT STORM DRAIN LATERALS UPSTREAM OF TREATMENT. THESE INCLUDE:
 - a) INLET I-13A TO I-20
 - b) INLET I15 TO THE LIFT STATION (INVERT IN)
- POTENTIAL CONTRIBUTION OF METALS OR TSS CONSTITUENTS TO STORMWATER FROM METAL PIPES.
- AREAS OF CRACKING, SURFACE SPALLING, OR WATER LEVEL SAG FOR STRUCTURAL STABILITY OF PIPING. THESE INCLUDE:
 - a) I54 TO DISCHARGE 403
 - b) I72 TO DISCHARGE 416
 - c) I06 TO I04
 - d) I37 TO I29 - JUNCTION FROM LATERAL TO MAIN TRUNK LINE

- PROPERTY BOUNDARY
- SURVEYED STORM DRAIN
- UNSURVEYED STORM DRAIN
- FLOW DIRECTION
- STORM STRUCTURE NAME
- STORM DRAIN SECTION WITH ENCRUSTATION
- ENCRUSTATION

NOTE: ALL STORM DRAINS IN GREEN COLOR DISCHARGE TO OUTFALL 013.

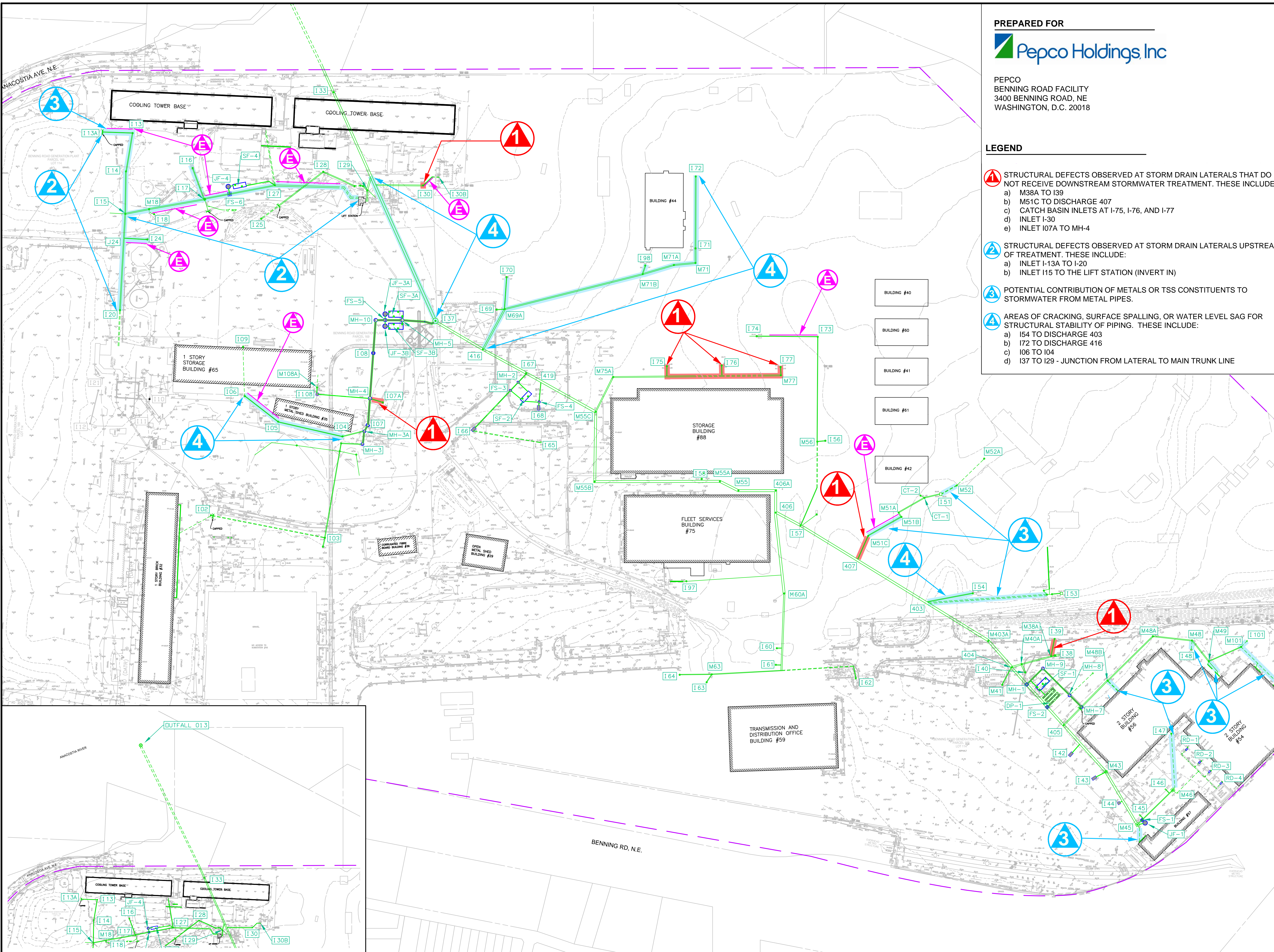


FIGURE TITLE

OBSERVATIONS FROM CCTV INSPECTION

MATCHLINE STA 8+00

PREPARED FOR

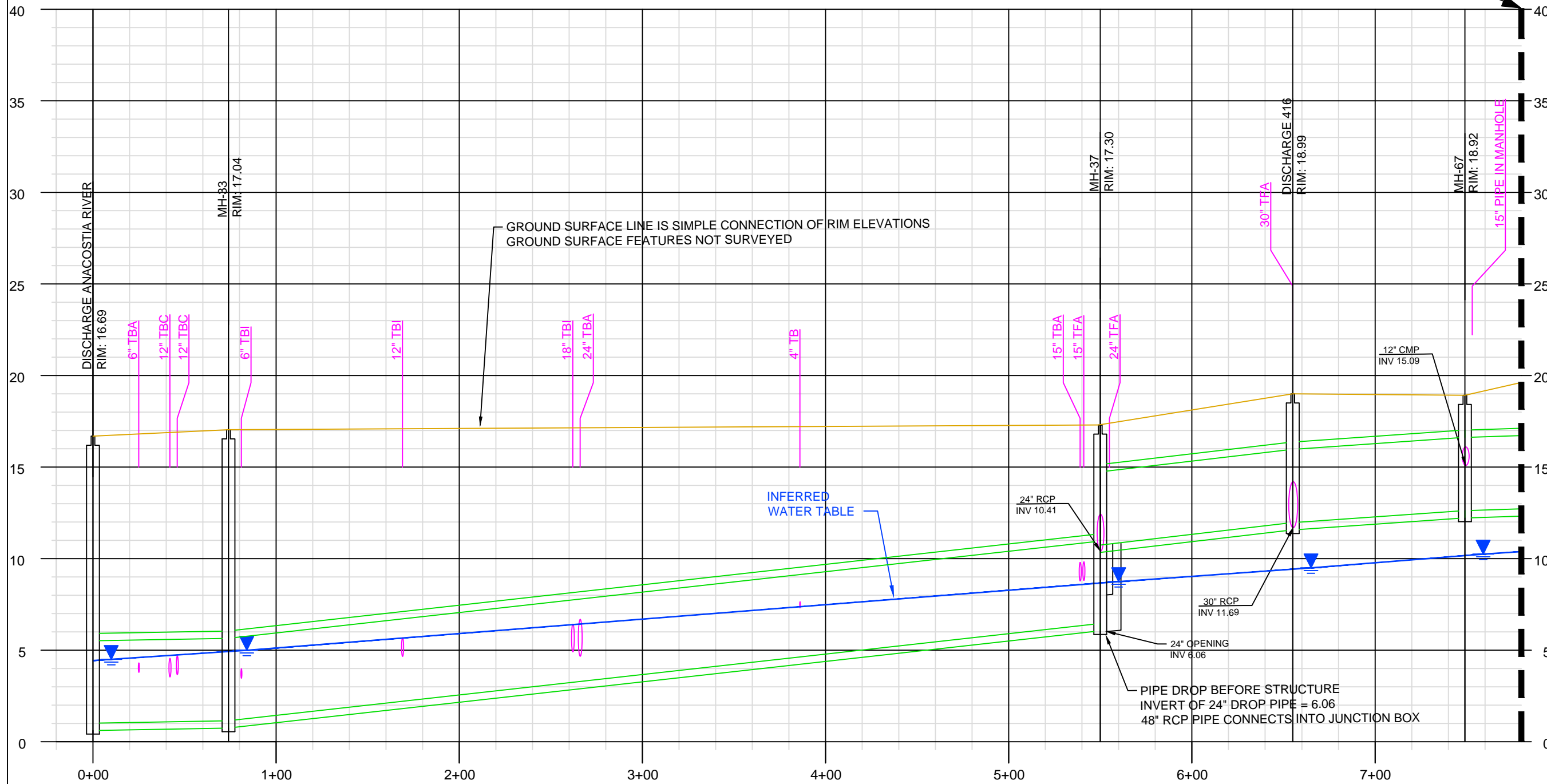


PEPCO
3400 BENNING RD, NE
WASHINGTON, D.C. 20019

PREPARED BY



AECOM
8000 VIRGINIA MANOR RD
SUITE 110
BELTSVILLE, MD 20705



PROFILE SCALE

1"=6' VERTICAL



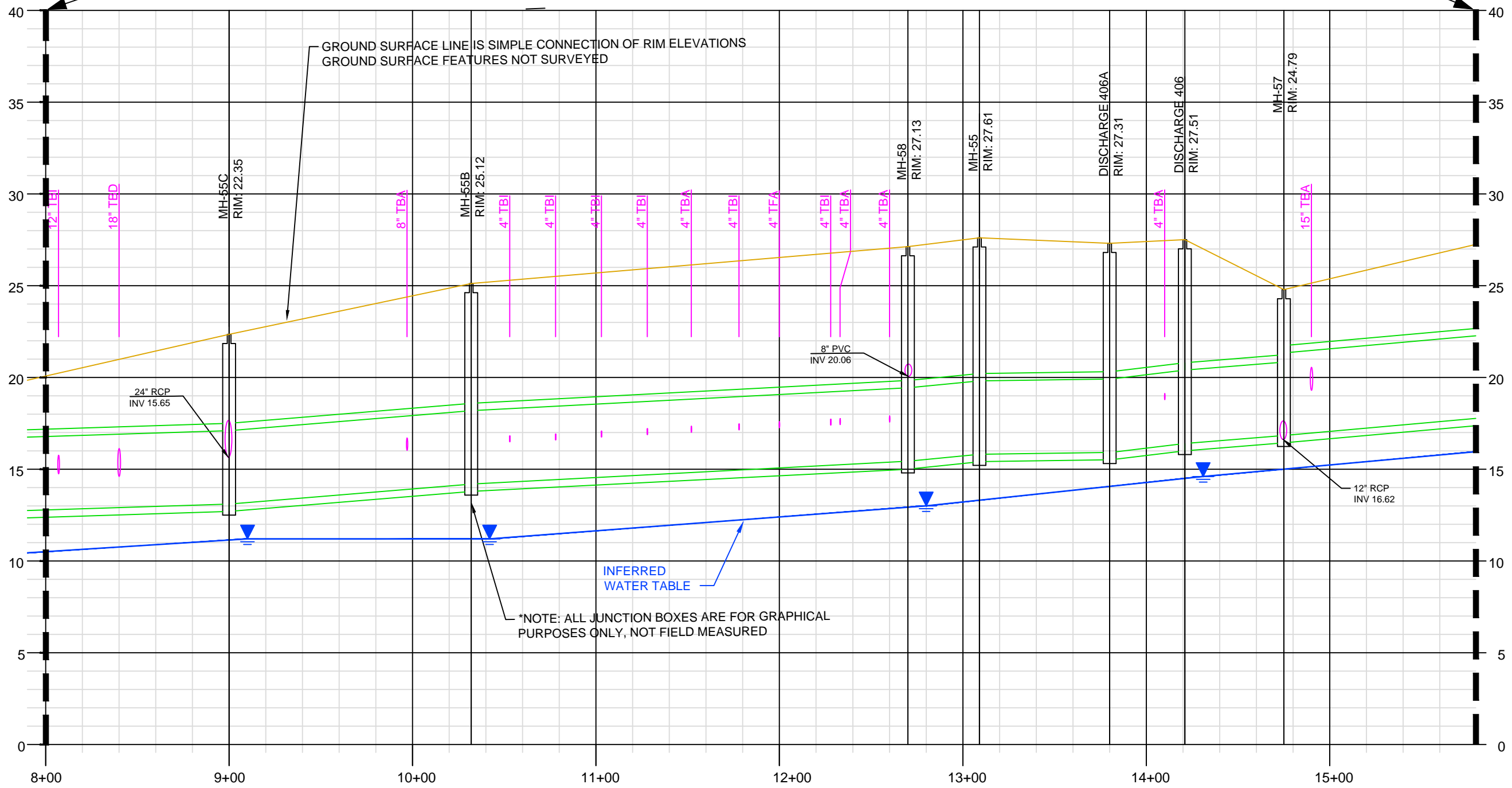
1"=60' HORIZONTAL



FIGURE NUMBER

MATCHLINE STA 8+00

MATCHLINE STA 15+75



GROUND SURFACE LINE IS SIMPLE CONNECTION OF RIM ELEVATIONS
GROUND SURFACE FEATURES NOT SURVEYED

8" PVC
INV 20.06

INFERRED
WATER TABLE

*NOTE: ALL JUNCTION BOXES ARE FOR GRAPHICAL
PURPOSES ONLY, NOT FIELD MEASURED

24" RCP
INV 15.65

12" RCP
INV 16.62

STA 9+00
INV 12.70

STA 10+32
INV 13.79

STA 12+70
INV 15.04

STA 13+09
INV 15.41

STA 13+80
INV 15.51

STA 14+20
NOT OPENED

STA 14+75
INV 16.44

PROFILE SCALE

1"=6' VERTICAL



1"=60' HORIZONTAL



PREPARED FOR



PEPCO
3400 BENNING RD, NE
WASHINGTON, D.C. 20019

PREPARED BY



AECOM
8000 VIRGINIA MANOR RD
SUITE 110
BELTSVILLE, MD 20705

FIGURE NUMBER

PREPARED FOR



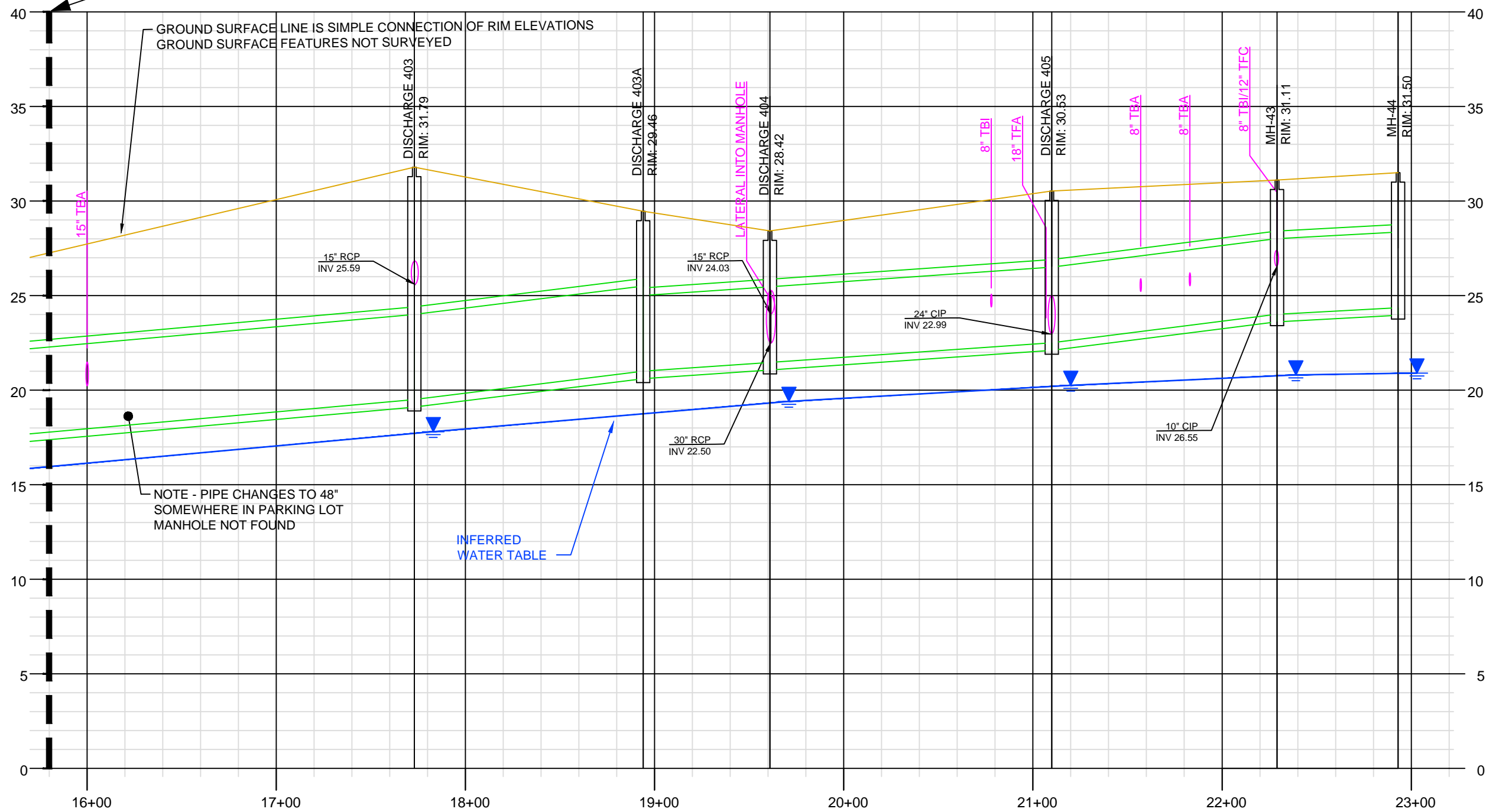
PEPCO
3400 BENNING RD, NE
WASHINGTON, D.C. 20019

PREPARED BY



AECOM
8000 VIRGINIA MANOR RD
SUITE 110
BELTSVILLE, MD 20705

MATCHLINE STA 15+75



PROFILE SCALE

1"=6' VERTICAL



1"=60' HORIZONTAL



FIGURE NUMBER